

FIND YOUR

DANCE

**2025 - 2026**

Dancewear Catalog

 *Pumpers*



Pumpers gives dance teachers and studios what they want:

- ♥ Customizable costumes from the catalog or website
- ♥ Matching boy/men costumes, made to order
- ♥ Fabulous competition quality costumes
- ♥ Orders that always arrive on time
- ♥ Unsurpassed customer service
- ♥ No hassel ordering

Create what you dream and design!

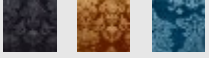
"Where your imagination becomes reality"

## TABLE OF CONTENTS

ROYALTY	3
SATIN	12
VELVET	17
TAYLOR	25
TUXEDO	29
PINSTRIPLE	37
TAFFETA	43
ANTO LACE	49
ASPEN	60
WICKED	68
SWEATER	72
LYRICAL	77
OMBRE LYRICAL	109
SPARKLE & LONG FRINGE	115
VINYL	122
METALLIC	132
BONGO	143
FUNZIE	146
TEMPLE	152
EYELET	153
GINGHAM	159
SUEDE	170
POLKA DOT	174
FLOCK ANIMAL	186
CHARACTER	190

# ROYALTY

## Royalty Colors



**83279**

Includes: Dress

Shown Slate



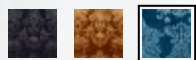
Mask is a prop. Not included



**83281**

Includes: Dress

Shown Slate



**83280**

Includes: Dress, Flare Arm and Brief

Shown Havana

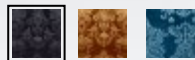




**83278**

Includes: Dress

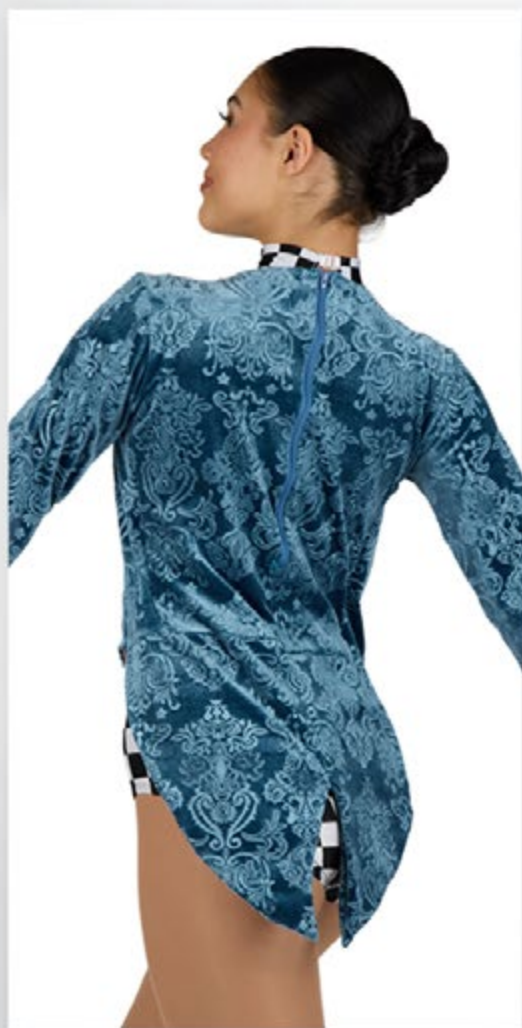
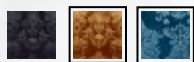
Shown Black



**83272**

**Includes:** Jacket and Leotard

Shown Slate Main and Havana Accent

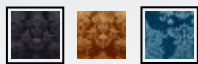




**83273**

Includes: Leotard and Choker

Shown Slate Main and Black Accent





**83277**

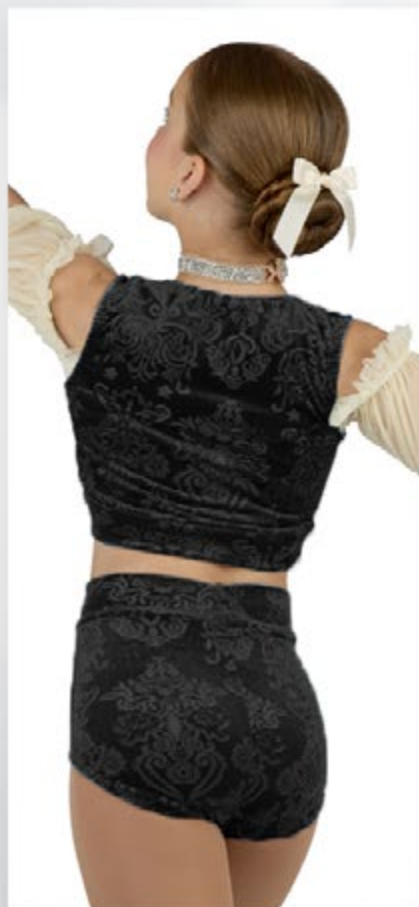
Includes: Top and Brief

Optional: Choker

Shown Slate



Shown Black



**83276**

Includes: Top and Skirt

Optional: Choker

Shown Slate

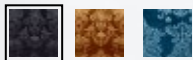


**83275**

Includes: Skirted Unitard

Optional: Mitts

Shown Black



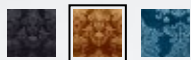


**83274**

Includes: Dress

Optional: Mitts

Shown Havana



# SATIN

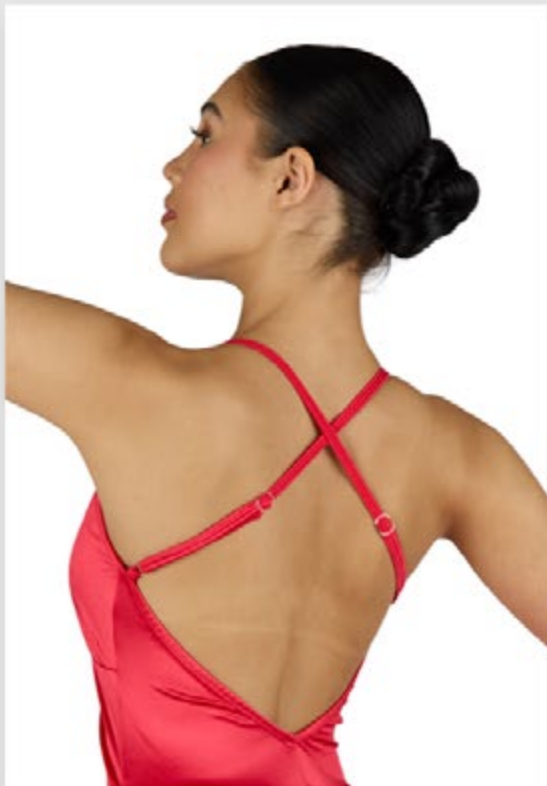
## Satin Colors



**83394**

Includes: Dress and Brief

Shown Red



# SATIN

**83398**

**Includes:** Top and Skirt

**Optional:** Mitts

Shown Baby Pink



**83399**

**Includes:** Top and Skirt

**Optional:** Mitts

Shown Red



Visit [pumpers.com](http://pumpers.com) for back views



# SATIN

**83396**

Includes: Dress

Optional: Gloves and Hair

Shown Black



Optional Hair



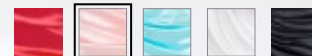
SATIN

83395

Includes: Dress

Optional: Mitts

Shown Baby Pink



SATIN

83397

Includes: Dress

Optional: Mitts

Shown Baby Blue





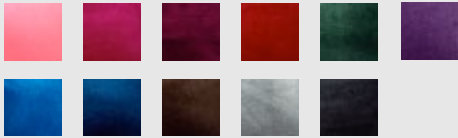
# VELVET

**83402**

Includes: Dress

Shown Forest

## Velvet Colors



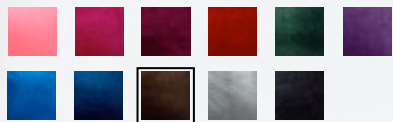
# VELVET

**83400**

Includes: Dress

Optional: Appliques

Shown Brown



Shown brown  
applique



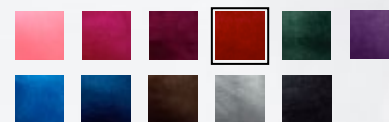
VELVET

83407

Includes: Dress

Optional: Mitts

Shown Red





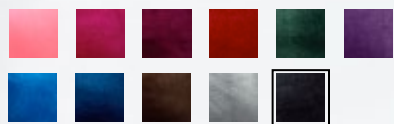
# VELVET

**83404**

Includes: Dress

Optional: Appliques

Shown Black



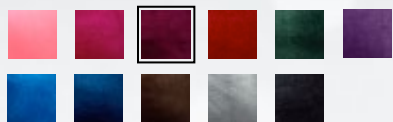
Shown black applique and hair



83410

Includes: Dress

Shown Burgundy

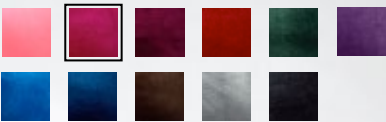


VELVET

83406

Includes: Top and Skirt

Shown Fuchsia

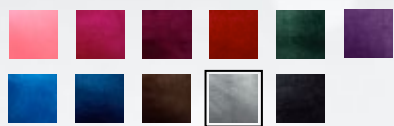




**83405**

Includes: Unitard

Shown Charcoal



**83408**

Includes: Dress

Optional: Mitts

Shown Purple Main  
and Black Accents



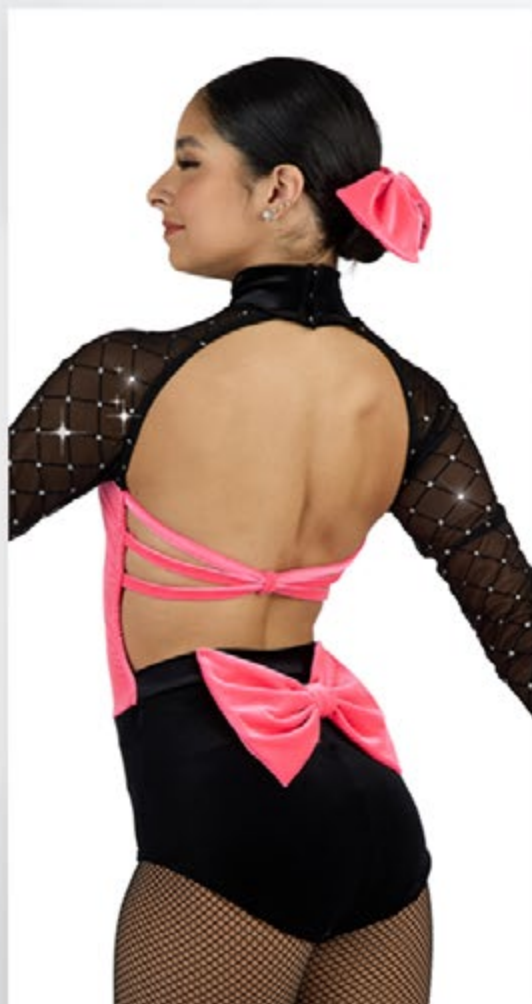
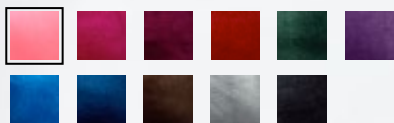
# VELVET

**83403**

Includes: Leotard

Optional: Hair

Shown Hot Pink



# TAYLOR

**83325**

Includes: Leotard with Tails (Short or Long)

Optional: Hair

Shown Black Sequin

Sequin Colors



Shown short tails





**83324**

Includes: Leotard with Tails  
(Short or Long)

Shown Silver on White Sequin



Shown long tails

**83326**

**Includes:** Leotard with Tails  
(Short or Long)

**Optional:** Hair, Mitts or Cuffs

Shown Hot Pink Sequin



Shown short tails

**83327**

**Includes:** Leotard with Tails  
(Short or Long)

**Optional:** Hair

Shown Red Sequin



Shown long tails





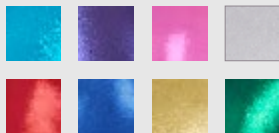
# TUXEDO

83319

Includes: Unitard with Peplum

Shown Gold Metallic

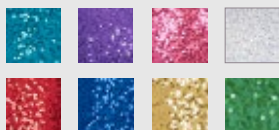
Metallic Colors (page 159 - 161)



Tricot Colors (page 162 - 165)



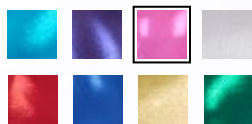
Sequine Colors (page 166)



**83318**

Includes: Dress

Shown Hot Pink Metallic



**83322**

Includes: Dress

Optional: Hair

Shown Hot Pink Metallic



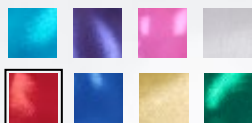
# TUXEDO

**83317**

Includes: Dress

Optional: Hair

Shown Red Metallic





# TUXEDO

**83320**

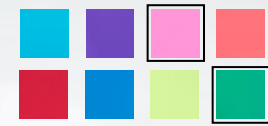
Includes: Jacket and Unitard

Shown Kelly Tricot

**83315**

Includes: Dress

Shown Hot Pink Tricot



# TUXEDO

**83314**

Includes: Dress

Shown Turquoise Tricot



# TUXEDO

**83316**

Includes: Dress

Shown Royal Tricot





**83313**

Includes: Jacket, Cami Top and Skirt

Shown Red Tricot



# TUXEDO



**83321**

Includes: Leotard With Tails

Optional: Hair

Shown Gold Sequine



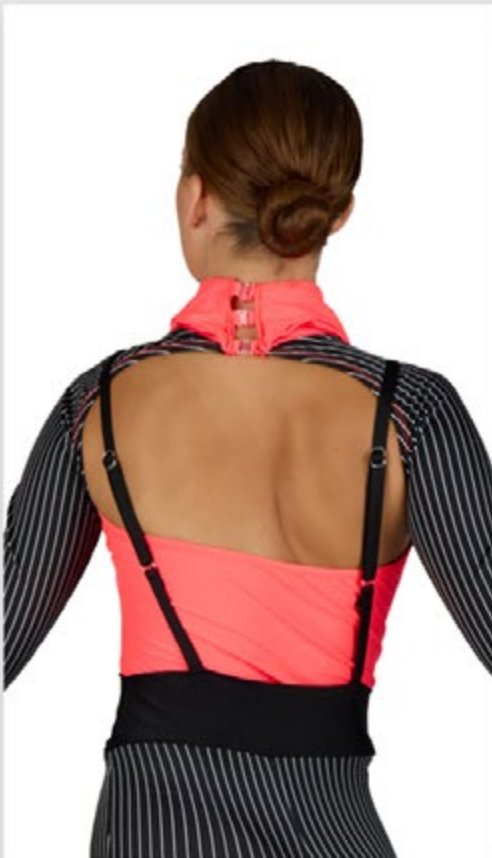
# PINSTRIPE

**83310**

Includes: Unitard

Shown Watermelon

Tricot Colors





# PINSTRIPE

**83308**

Includes: Unitard

Shown Neon Yellow



# PINSTRIPE

83311

Includes: Unitard

Shown Hot pink



# PINSTRIPE

**83309**

**Includes:** Top, Skirt with  
suspenders and Tie

**Optional:** Cuffs

Shown White





# PINSTRIPE

**83306**

**Includes:** Top with cuffed sleeves and Pants or Brief

**Optional:** Tie

Shown Red



Order with pants or brief

# PINSTRIPE

**83307**

Includes: Top and Pants or Brief

Optional: Tie

Shown Purple



Order with pants or brief



# TAFFETA

**83345**

Includes: Jacket and  
Leotard or Unitard

Shown Black

## Taffeta Colors



## Tricot Colors



## Applique Colors



Skirt section is ruffled at the waist





# TAFFETA

**83340**

Includes: Jacket and  
Leotard or Unitard

Shown Moss Jacket and Unitard



**83340**

Includes: Jacket and  
Leotard or Unitard

Shown Pink Jacket and Black Unitard



**83341**

Includes: Top and Skirt

Shown Black





# TAFFETA

**83342**

Includes: Top and Skirt

Optional: Choker, Hair and Appliques

Shown Red



# TAFFETA

**83343**

Includes: Top and Skirt

Optional: Appliques

Shown White



Skirt can be tied up or let down



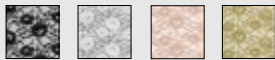
# ANTO LACE

83381

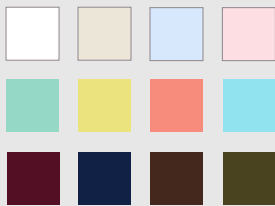
Includes: Dress

Shown Nude Lace and  
Burgundy Tricot

Anto Lace Colors



Tricot Colors





# ANTO LACE

**83382**

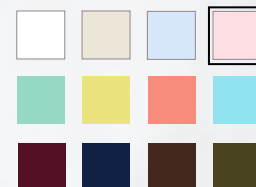
Includes: Leotard

Optional: Hair

Shown Black Lace



Shown Baby Pink Tricot



# ANTO LACE



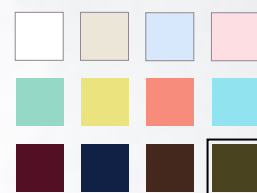
**83384**

Includes: Top and Skirt

Shown Gold Lace



Shown Olive Tricot



Skirt color matches lace

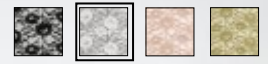


# ANTO LACE

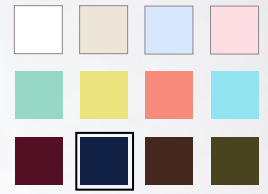
83385

Includes: Dress

Shown White Lace



Shown Navy Tricot



Shown Gold Lace  
and Brown Tricot





# ANTO LACE

**83383**

Includes: Top and Brief

Shown Gold Lace



Shown Navy Tricot



# ANTO LACE

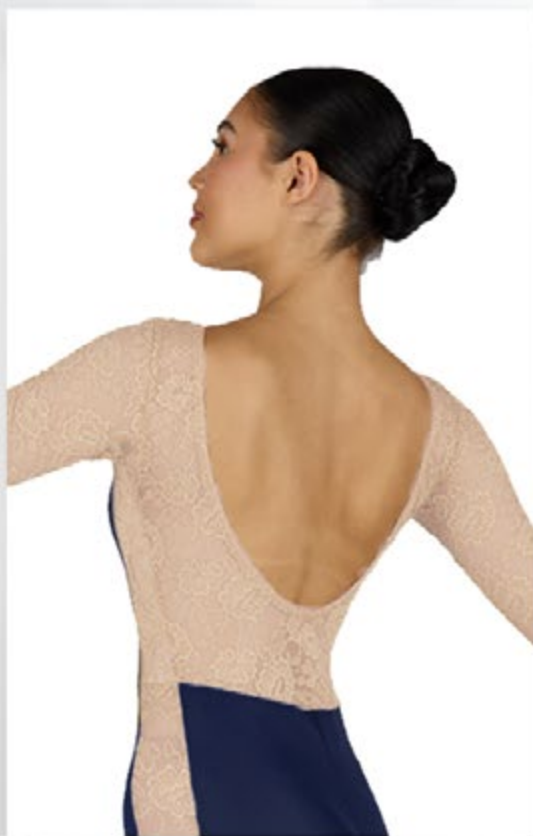
**83389**

Includes: Unitard

Shown Gold Lace  
and Olive Tricot



Shown Nude Lace and Navy Tricot



# ANTO LACE



**83387**

Includes: Top and Brief

Optional: Choker

Shown White Lace



Shown Aqua Tricot





# ANTO LACE

**83386**

Includes: Dress

Shown White Lace



Lemon Tricot and Mesh



# ANTO LACE

**83391**

Includes: Top and Skirt

Optional: Hair

Shown White Lace



Shown Nude Tricot



# ANTO LACE

**83388**

Includes: Top and Brief

Optional: Hair

Shown Black Lace



Shown Nude Tricot





**83393**

Includes: Dress

Shown Nude Lace  
and Nude Tricot



**83392**

Includes: Dress

Optional: Hair

Shown Black Lace and Nude  
Tricot with Black Tricot Skirt



Skirt color matches lace

# ASPEN

**83262**

Includes: Top and Pant

Shown Smokey Blue

Aspen Dot and Matching Tricot

**Smokey Blue**



**Blush**



**Kiwi**



**Honey**



# ASPEN



**83260**

Includes: Dress

Shown Smokey Blue





# ASPEN

**83268**

Includes: Cover-Up Top,  
Cami top, Shorts over Brief

Shown Smokey Blue



Cover-up top is reversible



83261

Includes: Top and Brief

Shown Honey





**83267**

Includes: Dress and Armband

Shown Honey



**83269**

Includes: Top and Pant

Shown Kiwi





**83263**

Includes: Dress

Optional: Choker

Shown Kiwi



Choker (ANK11) never  
snags, never breaks

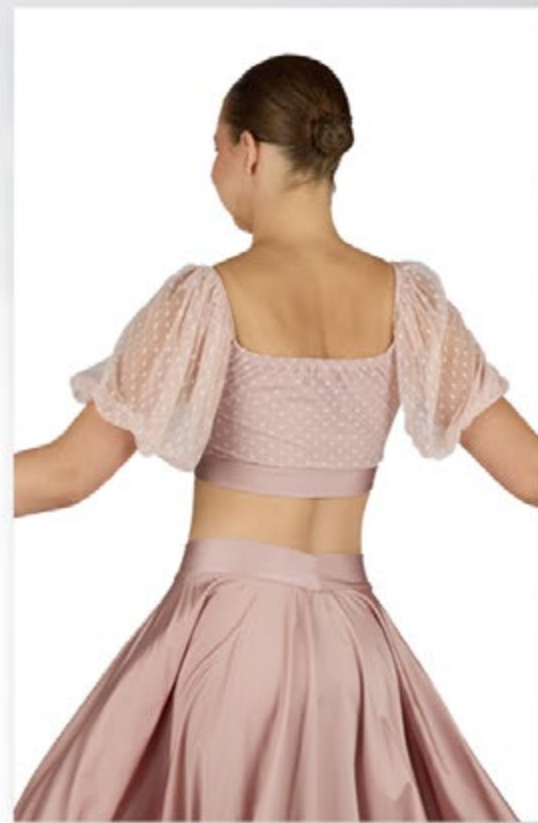


# ASPEN

**83264**

Includes: Top and Skirt

Shown Blush

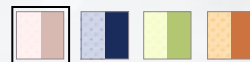




**83266**

Includes: Top and Cover-Up

Shown Blush



Choose Camisole,  
Leotard or Unitard



# WICKED

**83331**

Includes: Top and Skirt

Optional: Appliques and Hair

As Shown



# WICKED

**83332**

Includes: Dress

Optional: Appliques

As Shown

Taffeta skirt can be bustled or let down



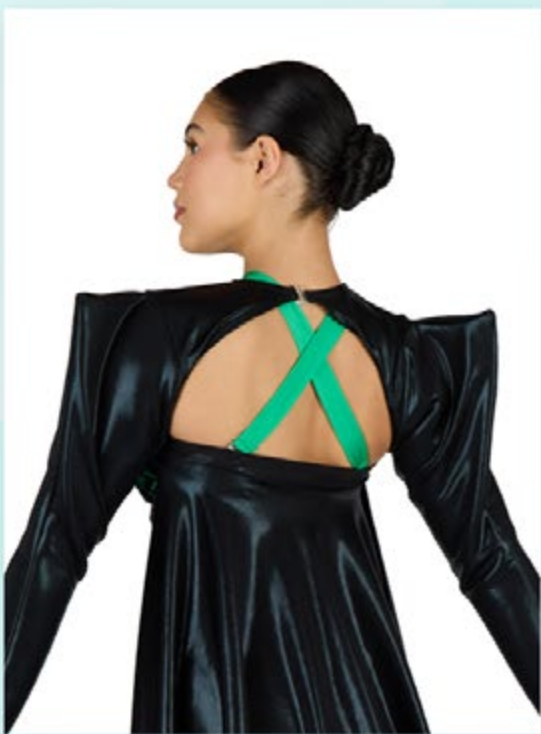


# WICKED

**83333**

Includes: Shrug, Top and Boy Short

As Shown





# WICKED

**83334**

Includes: Top and Brief

Optional: Hair

As Shown



# SWEATER

Sweater Colors



**83292**

Includes: Baggy  
Hooded Top

Shown Grey

**83282**

Includes: Pants

Shown Fuchsia

**83284**

Includes: Skirt



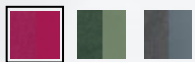
# SWEATER

**83286**

Includes: Baggy Top

Optional: Cami Top

Shown Fuchsia



**83289**

Includes: Long Sleeve Top

Shown Fuchsia

**83285**

Includes: Brief

Shown Fuchsia





# SWEATER



**83288**

Includes: Baggy Top

Optional: Cami Top

Shown Olive



**83283**

Includes: Pants

Shown Olive

**83284**

Includes: Skirt

Shown Olive



# SWEATER

**83293**

Includes: Baggy Top and Tie

Optional: Cami Top

Shown Olive



**83290**

Includes: Sleeveless Top

Shown Olive



# SWEATER

**83287**

Includes: Cowl Neck Top

Shown Grey



**83284**

Includes: Skirt

Shown Grey



**83291**

Includes: Romper, Top and Brief

Shown Fuchsia



# LYRICAL

**83435**

Includes: Top and Skirt

Shown Dusty Rose



White



Black



Dark Grey



D. Rose



Blush



Hot Pink



Cerise



Fuchsia



Red



Burgundy



Merlot



Peach



Watermelon



Neon Orange



Copper



Brown



Lemon



Neon Yellow



Golden



Marigold



Celery



Lime



Jade



Kelly



Forest



Olive



Mallard



B. Blue



Aqua



Turquoise



Royal



Periwinkle



Denim



Navy



Lilac



Hibiscus



Plum



Purple



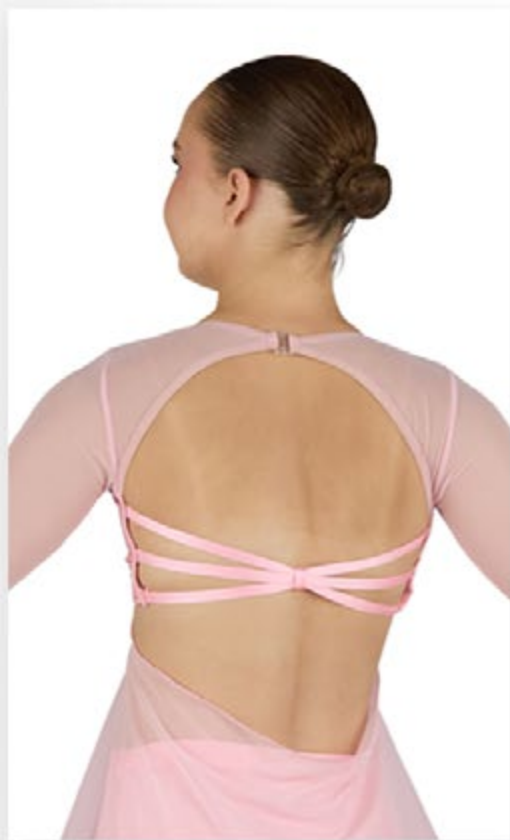
Visit [pumpers.com](http://pumpers.com) for back views

# LYRICAL

**83428**

Includes: Top and Brief

Shown Blush

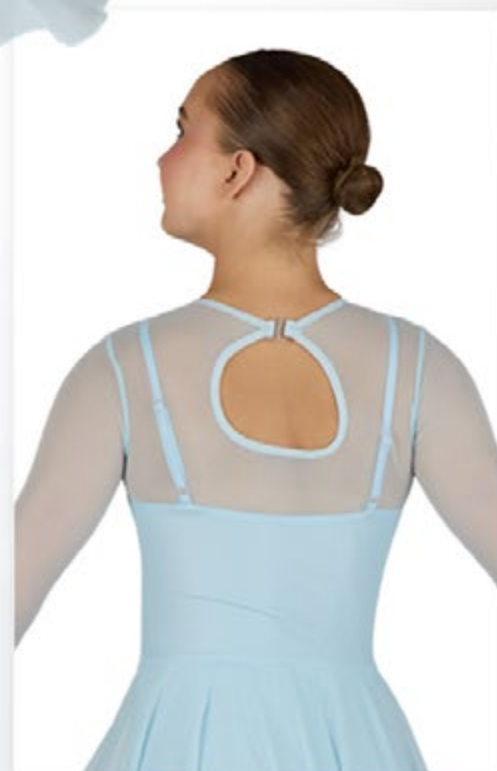


# LYRICAL

**83422**

Includes: Dress

Shown Baby Blue





**83424**

Includes: Dress

Shown Mallard



**83421**

Includes: Top and Skirt

Shown Merlot



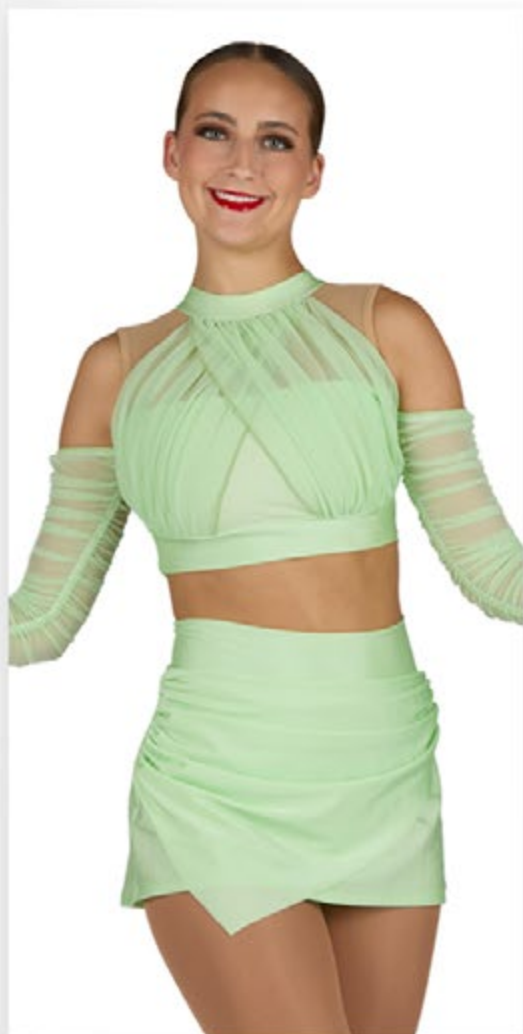
**83423**

Includes: Top and Skirt

Shown Celery



Also available with tricot front panel



# LYRICAL

**83420**

Includes: Top and Skirt

Shown Navy



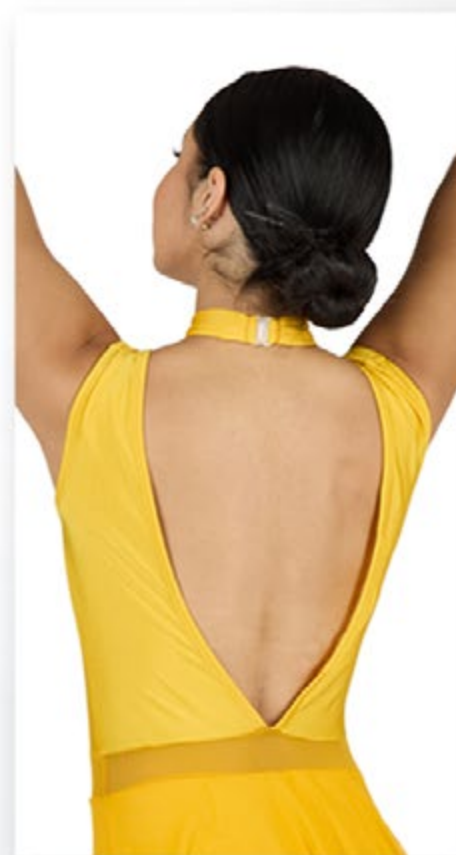


# LYRICAL

**83431**

Includes: Dress

Shown Marigold



**83429**

Includes: Dress

Shown Red



**83434**

Includes: Dress

Shown Navy



**83460**

Includes: Leotard

Shown Navy



**83457**

Includes: Dress

Shown Red





**83456**

Includes: Dress

Shown Celery



# LYRICAL

**83433**

Includes: Dress

Shown Lemon



# LYRICAL

**83426**

Includes: Dress and Belt

Optional: Mitts and Hair

Shown Black Main and Red Accent



Optional Hair



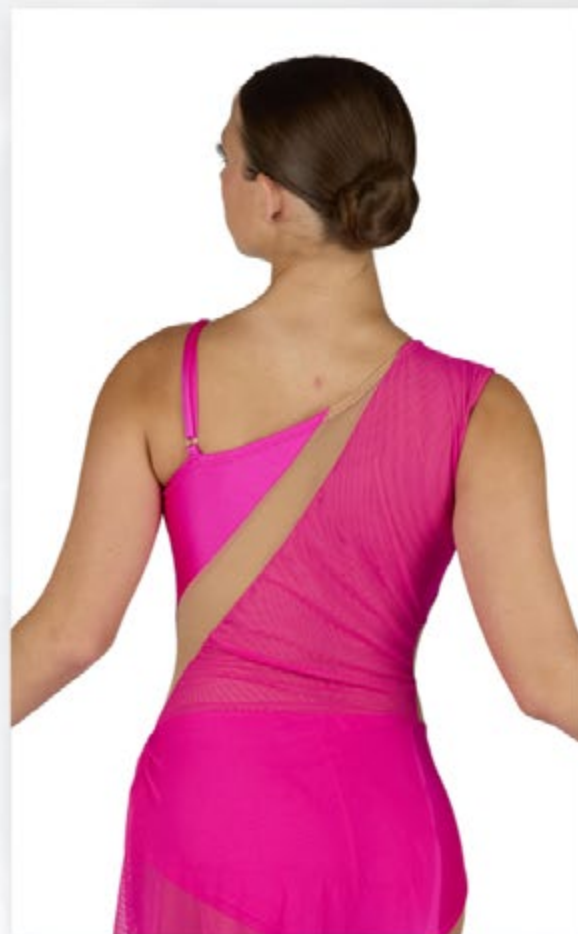
Shown Black Main  
and Accent



**83418**

Includes: Dress

Shown Cerise



# LYRICAL

**83437**

**Includes:** Leotard

**Optional:** Mitts

Shown Fuchsia Main

Hot Pink Accent



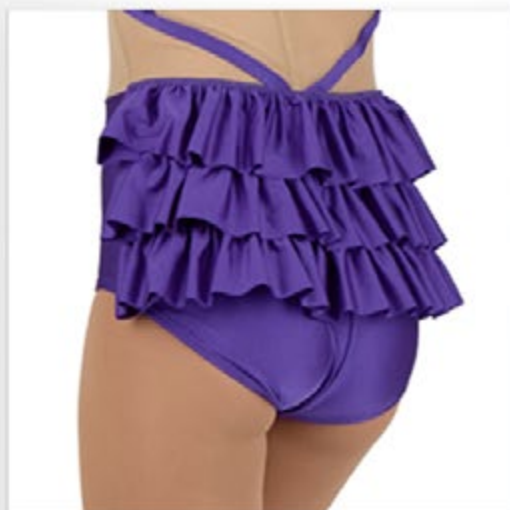
# LYRICAL

**83443**

Includes: Leotard

Optional: Mitts

Shown Purple





# LYRICAL

**83459**

Includes: Top and Skirt

Shown Dark Grey



**83453**

Includes: Dress

Optional: Mitts and Appliques

Shown Plum



Optional Appliques

**83417**

**Includes:** Top and Skirt

**Optional:** Appliques

Shown Red Main Dark Grey Accent

Optional Appliques





# LYRICAL

**83419**

Includes: Cover-up, Cami Top  
and Pants

Shown Olive



**83430**

Includes: Top and Skirt

Shown Peach Main and  
Brown Accent

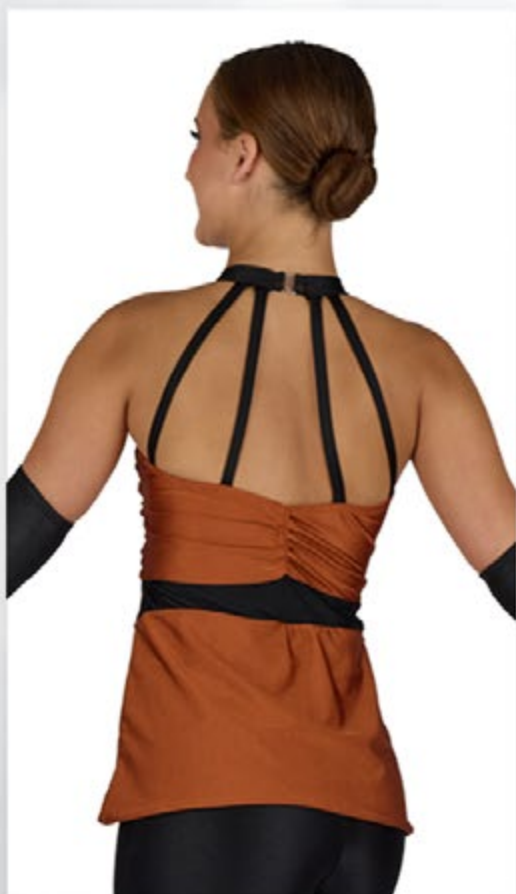


# LYRICAL

**83442**

Includes: Unitard

Shown Copper





**83461**

Includes: Top and Brief  
Over Biker Short

Shown Neon Yellow



**83452**

Includes: Top  
and Pants

Shown Neon Yellow



**83454**

**Includes:** Leotard

**Optional:** Mitts and Choker

Shown Cerise



**83458**

Includes: Leotard

Shown Purple





**83448**

Includes: Top and Skirt

Shown Lime Main Neon  
Orange Accent



Shown Cerise Main  
Turquoise Accent



**83449**

Includes: Leotard

Optional: Mitts and Hair

Shown White



**83438**

Includes: Top and Skirt

Shown Watermelon Main and  
Neon Yellow Accent





# LYRICAL

**83439**

Includes: Leotard

Optional: Mitts

Shown Fuchsia Main and  
Kelly Accent



**83451**

Includes: Leotard

Optional: Mitts

Shown Lime

Shown Cerise



**83447**

Includes: Top and Pant

Optional: Headband

Shown Purple and Yellow Trim





**83455**

Includes: Dress

Shown Red



Shown Mallard



**83445**

Includes: Leotard

Shown Combo #1

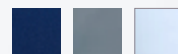
**Combo #1**



**Combo #2**



**Combo #3**



**Combo #4**



# OMBRE LYRICAL

Ombre Lyrical Colors



**83412**

Includes: Top, Skirt, Choker

Shown Greys





# OMBRE LYRICAL

**83411**

Includes: Dress

Shown Blues



# OMBRE LYRICAL

**83414**

Includes: Top and Brief

Optional: Choker

Shown Greys



# OMBRE LYRICAL

83415

Includes: Unitard

Shown Blues



Order with leggings  
or a boy short



# OMBRE LYRICAL

**83416**

Includes: Dress

Optional: Appliques

Shown Greys



# OMBRE LYRICAL

**83413**

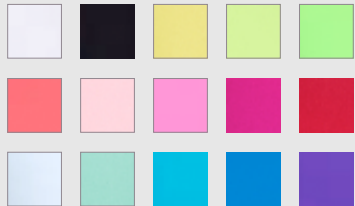
Includes: Dress

Shown Blue



# SPARKLE & LONG FRINGE

## Tricot Colors



**83365**

Includes: Leotard and Choker

Optional: Gloves and  
Appliques

Shown Fuchsia



# SPARKLE & LONG FRINGE

**83364**

Includes: Leotard and Choker

Optional: Mitts and Applique

Shown White



# SPARKLE & LONG FRINGE

**83366**

Includes: Leotard

Optional: Mitts and Hair

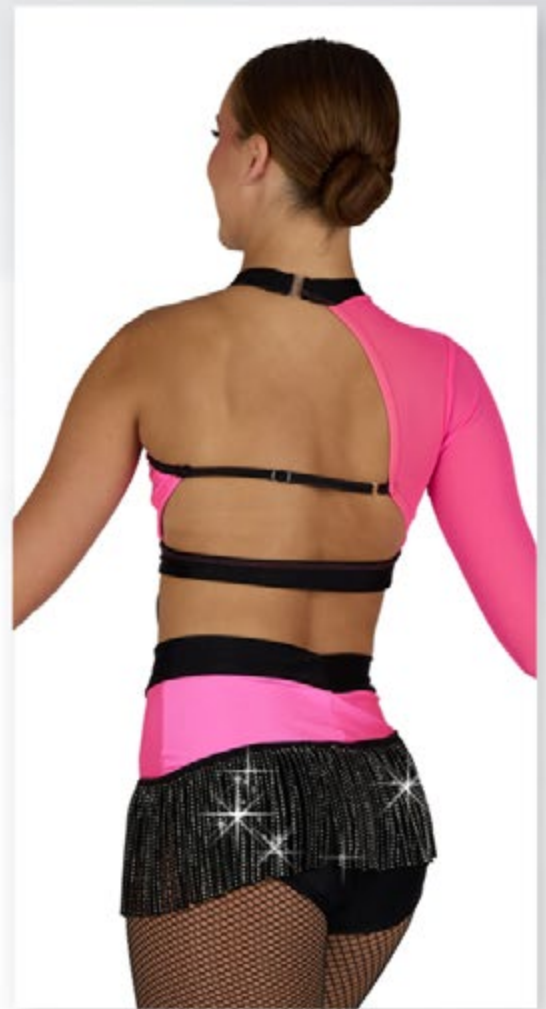
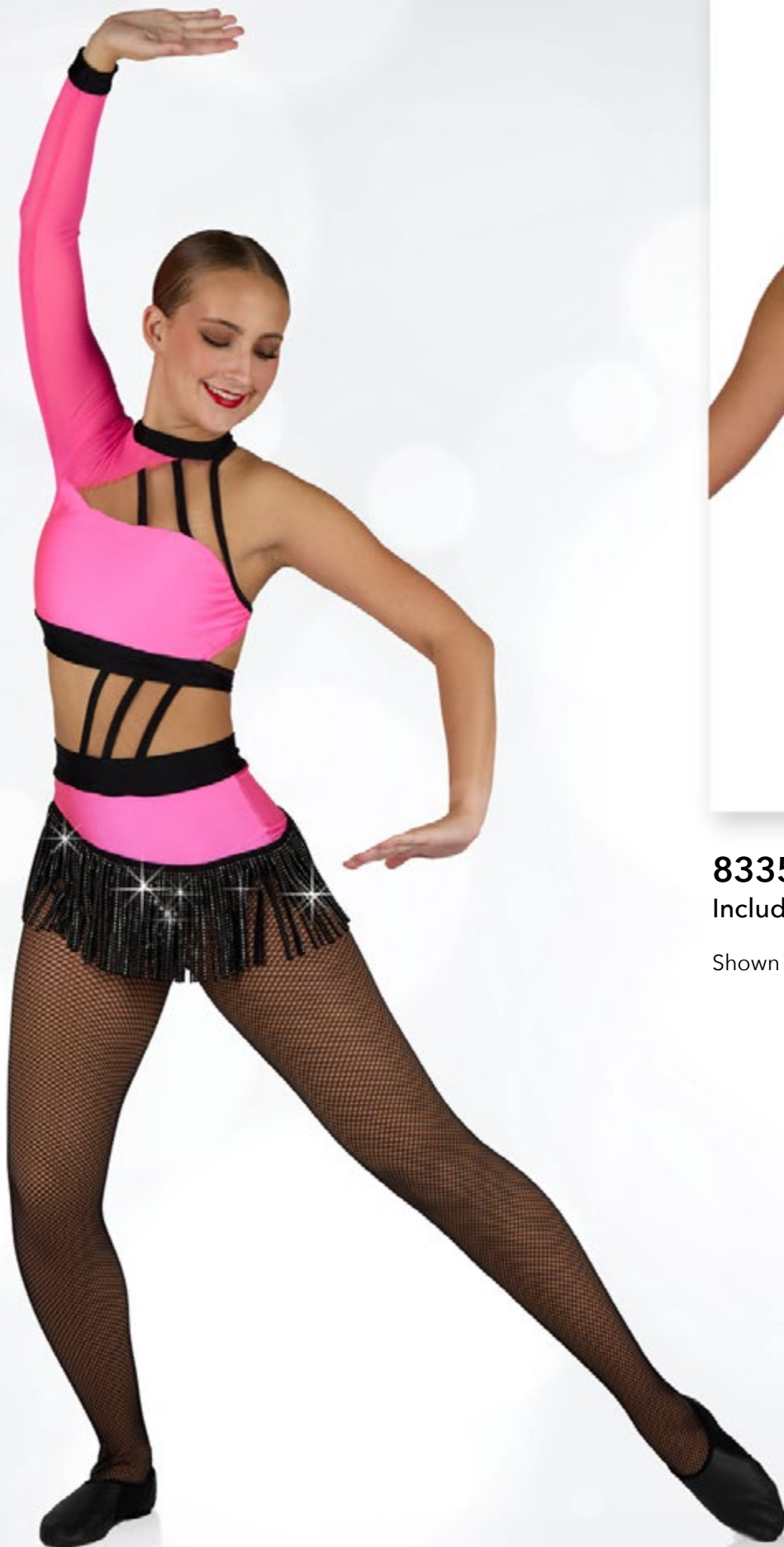
Shown Black



Optional Hair



# SPARKLE & LONG FRINGE



**83359**

Includes: Leotard

Shown Hot Pink



# SPARKLE & LONG FRINGE

**83360**

**Includes:** Leotard and Choker

**Optional:** Mitts

Shown Watermelon



# SPARKLE & LONG FRINGE

**83361**

Includes: Top and Brief

Optional: Mitts

Shown Blush





# SPARKLE & LONG FRINGE

**83362**

Includes: Leotard and Choker

Optional: Mitts

Shown Red





# VINYL

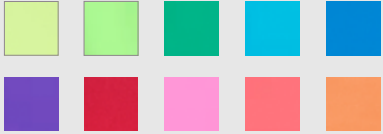
**83353**

Includes: Top and Brief

Optional: Mitts and Headband

Shown Turquoise Main and Watermelon Accent

## Tricot Colors

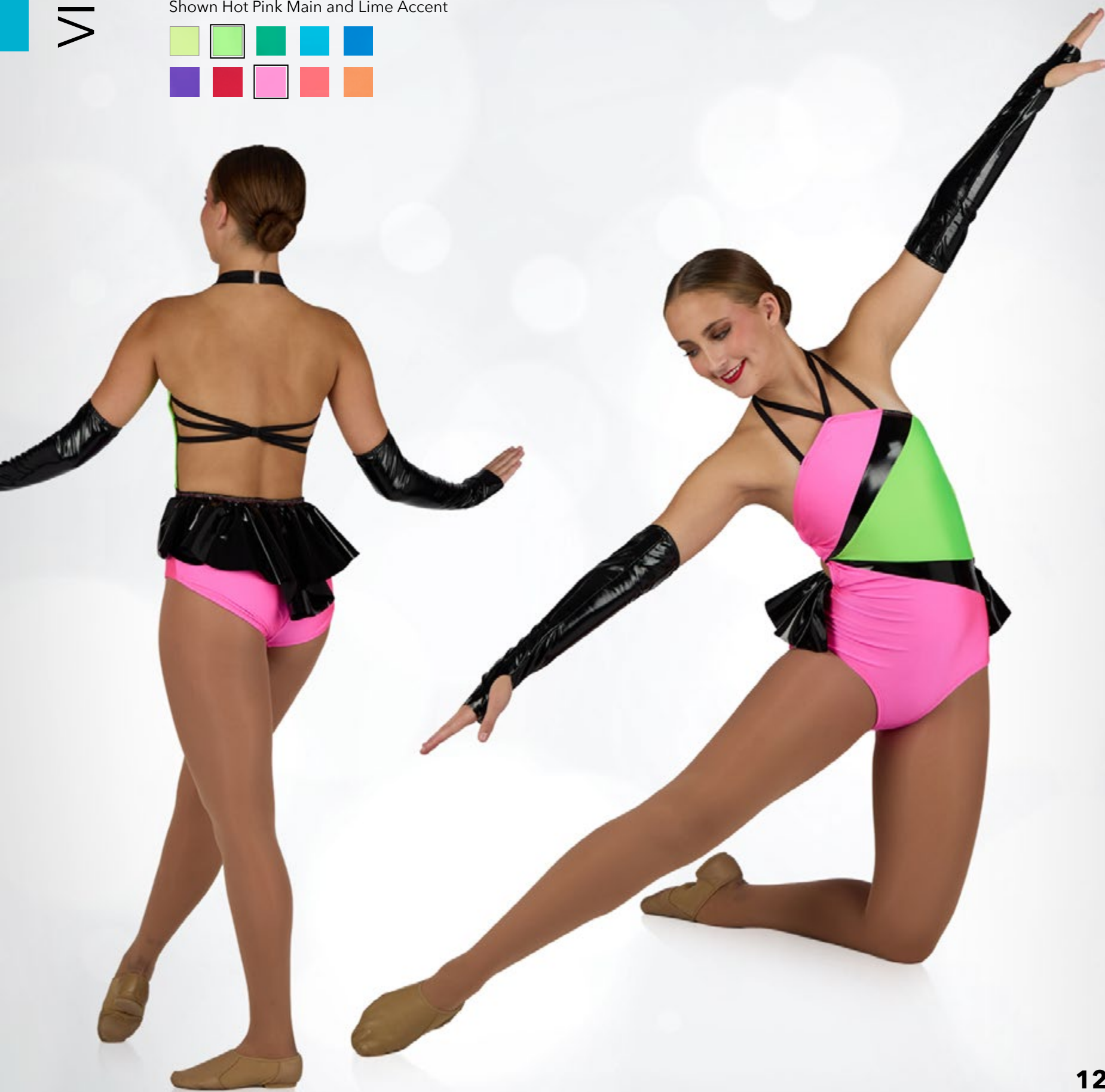
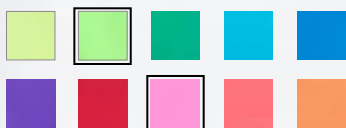


**83351**

Includes: Leotard

Optional: Mitt

Shown Hot Pink Main and Lime Accent

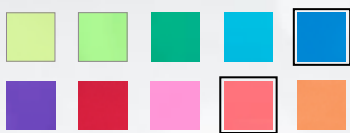


VINYL

83354

Includes: Leotard

Shown Watermelon Main and Royal Accent



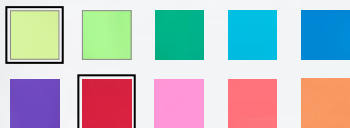


**83348**

Includes: Top and Brief

Optional: Headband

Shown Red Main and Neon Yellow Accent



**83352**

Includes: Top and Leggings

Optional: Headband

Shown Neon Yellow Main and Royal Accent

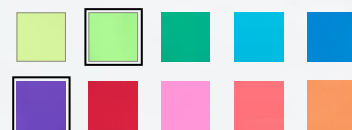


**83347**

Includes: Leotard and Choker

Optional: Mitts

Shown Purple Main and Lime Accent



83357

Includes: Dress

Optional: Mitts

Shown Neon Yellow Main and Turquoise Accent



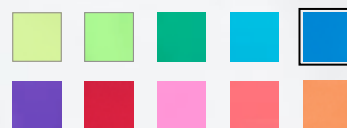


**83349**

Includes: Leotard

Optional: Mitts, Choker and Belt

Shown Royal Trim

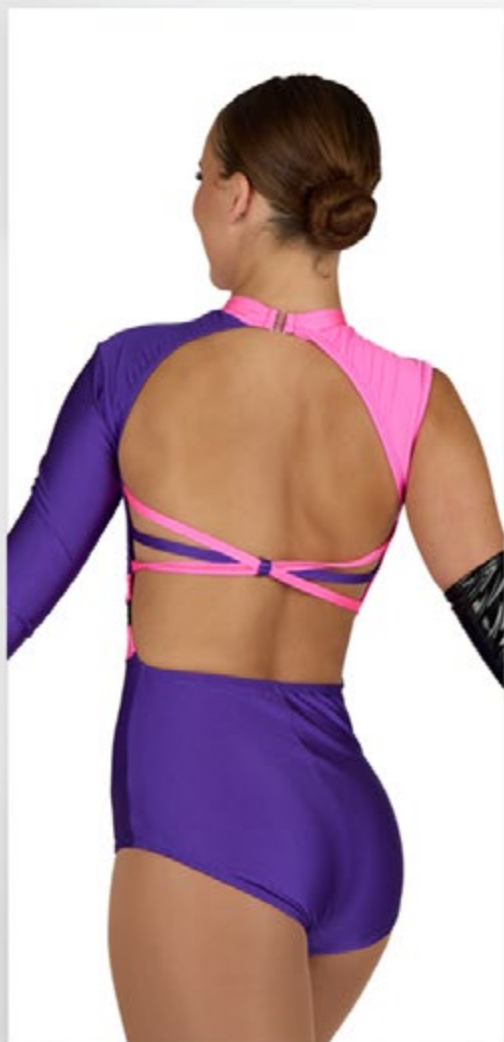
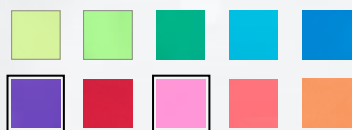


Shown with optional  
red belt and choker

83350

Includes: Leotard and Mitt

Shown Purple Main Hot Pink Accent

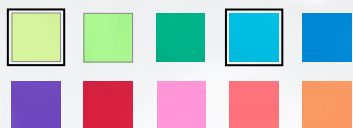


**83355**

Includes: Leotard

Optional: Mitts

Shown Neon Yellow Main Turquoise Accent



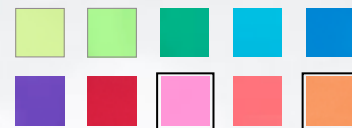


**83356**

Includes: Leotard and Belt

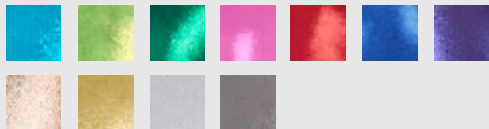
Optional: Mitts

Shown Hot Pink Main Neon Orange Accent

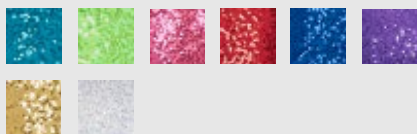


# METALLIC

Metallic Colors (page 89 - 99)



Sequin Colors (page 96 - 97)



Optional Applique



**83376**

Includes: Top and Skirt

Optional: Mitts and Appliques

Shown Red



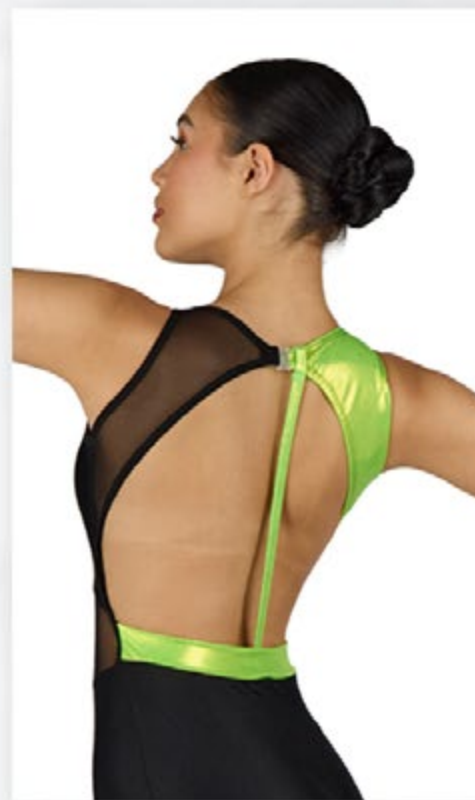
# METALLIC

**83370**

Includes: Unitard

Optional: Mitts

Shown Lime





# METALLIC

**83373**

Includes: Leotard

Optional: Mitts and Hair

Shown Hot Pink



Shown Purple



# METALLIC

**83380**

Includes: Top and Skirt

Shown Turquoise



Shown Lime

# METALLIC

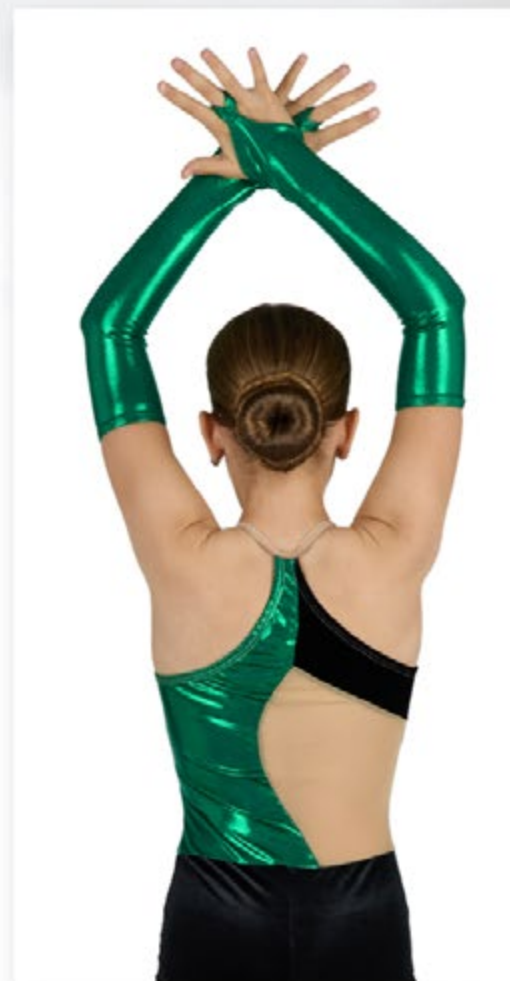


**83374**

Includes: Unitard

Optional: Mitts

Shown Kelly





# METALLIC

**83367**

**Includes:** Leotard

**Optional:** Appliques

Shown Bronze



**83378**

**Includes:** Leotard

**Optional:** Buttons,  
Appliques and Boots

Shown Silver



# METALLIC

**83379**

**Includes:** Leotard

**Optional:** Appliques  
and Boots

Shown Bronze



# METALLIC

**83369**

Includes: Leotard and Mitt

Shown Red Metallic and Sequin

Shown Lime Metallic and Turquoise Sequin





# METALLIC

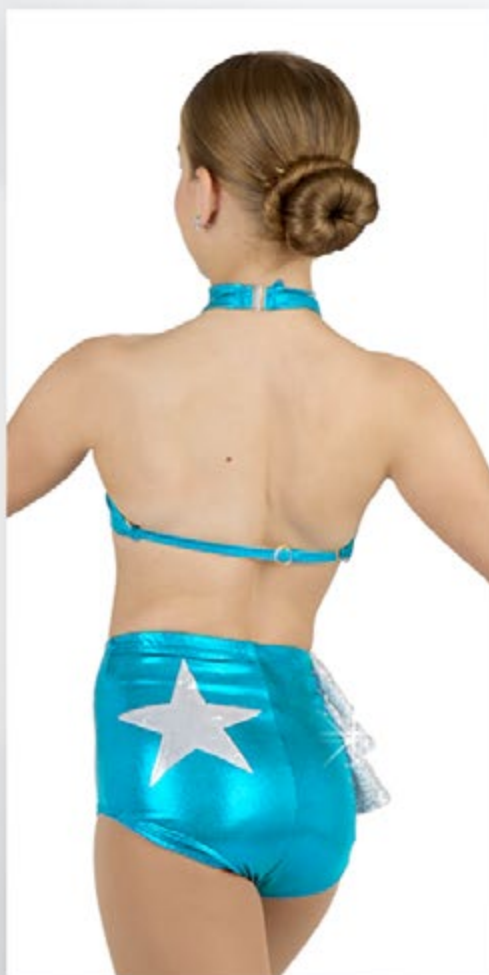
**83368**

Includes: Top and Brief

Optional: Mitts

Shown Royal

Shown Turquoise

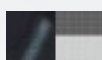


**83335**

Includes: Dress

Optional: Arms and Choker

Shown Flower



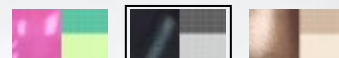
Shown Browns

83336

Includes: Top and Skirt

Optional: Arms

Shown Blacks





# BONGO

83517

Includes: Dress

Optional: Mitts and Appliques

Shown Fuchsia

## Fuchsia

Main: Fuchsia Metallic

Ruffles: Orange over Lime over Turquoise

Optional Appliques: Lime

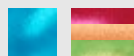


## Turquoise

Main: Turquoise Metallic

Ruffles: Fuchsia over Orange over Lime

Optional Appliques: Orange



## Orange

Main: Orange Metallic

Ruffles: Lime over Turquoise over Fuchsia

Optional Appliques: Lime



## Lime

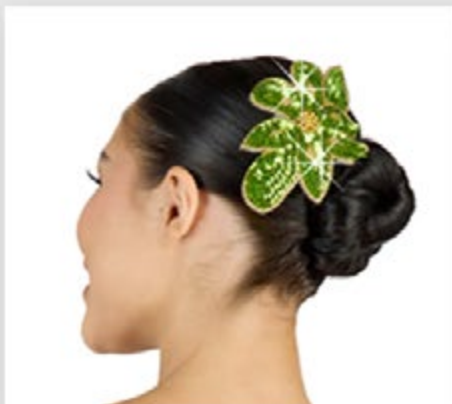
Main: Lime Metallic

Ruffles: Turquoise over Fuchsia over Orange

Optional Appliques: Pink



Optional Lime Applique



# BONGO

**83516**

Includes: Tie Top, Cami Top, Leggings

Optional: Ruffle Legs and Appliques



Optional Ruffle Legs



Shown Lime

**83518**

**Includes:** Top and Brief

**Optional:** Mitts, Choker and Appliques

Shown Orange



**83519**

**Includes:** Leotard

**Optional:** Mitts and Appliques

Shown Lime



Visit [pumpers.com](http://pumpers.com) for back views



# FUNZIE

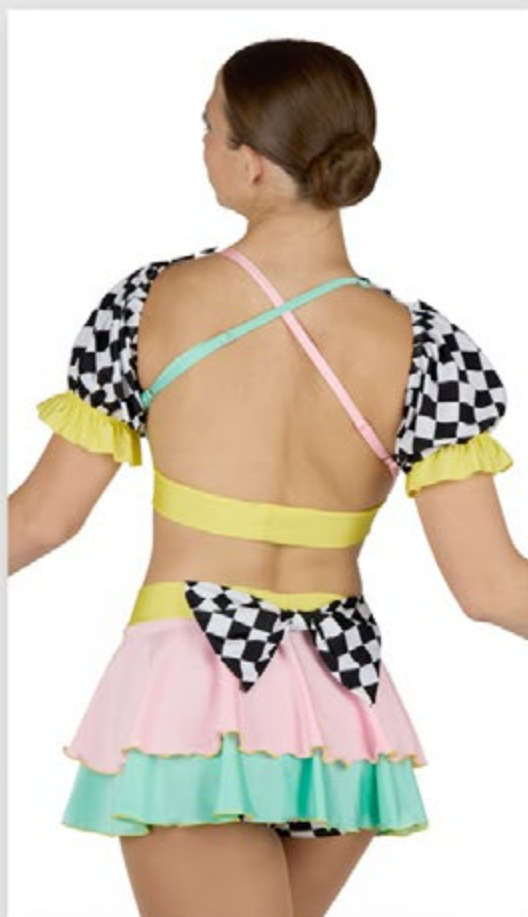
Tricot Colors



**83508**

Includes: Top and Skirt

As Shown



83504

Includes: Unitard

Shown Mint

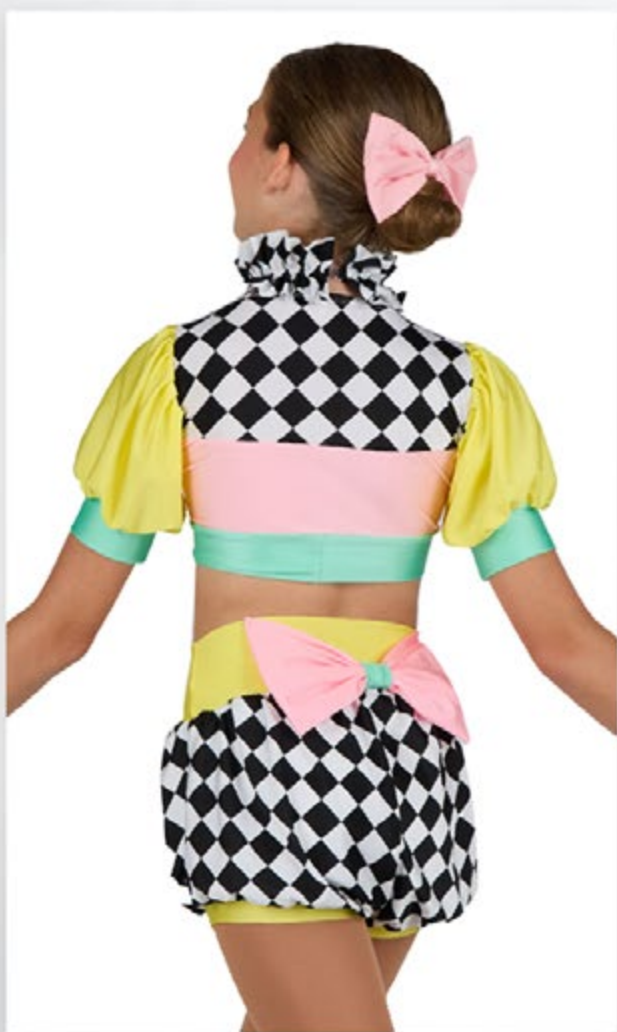


**83507**

Includes: Top, Bubble Shorts,  
Choker

Optional: Mitts and Hair

As Shown



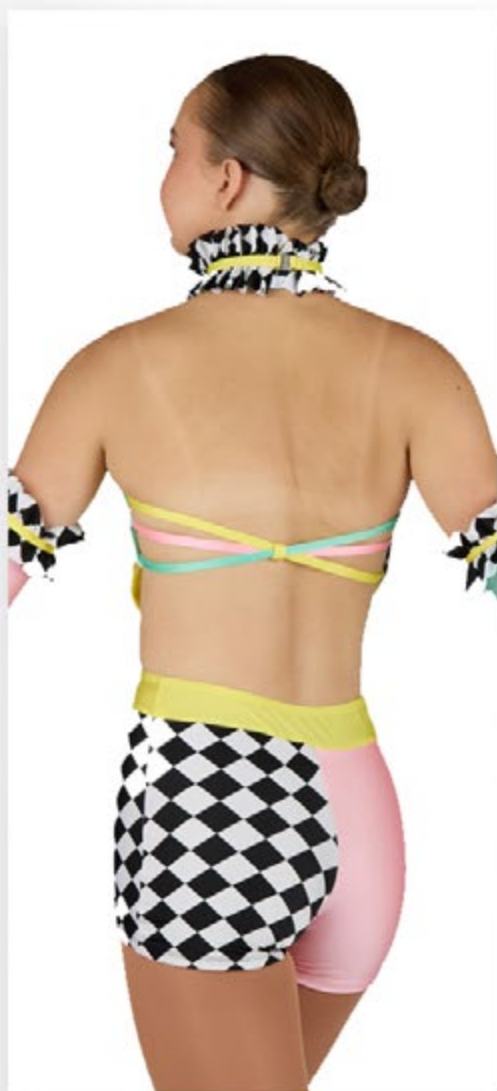


**83506**

Includes: Unitard and Choker

Optional: Mitts

As Shown



**83505**

Includes: Jacket and Leotard

Optional: Hair

As Shown



**83509**

Includes: Top and Skirt

Optional: Mitts

As Shown





# TEMPLE

**83467**

Includes: Dress

Optional: Mitts

As Shown



# EYELET

**83489**

Includes: Top and Pants

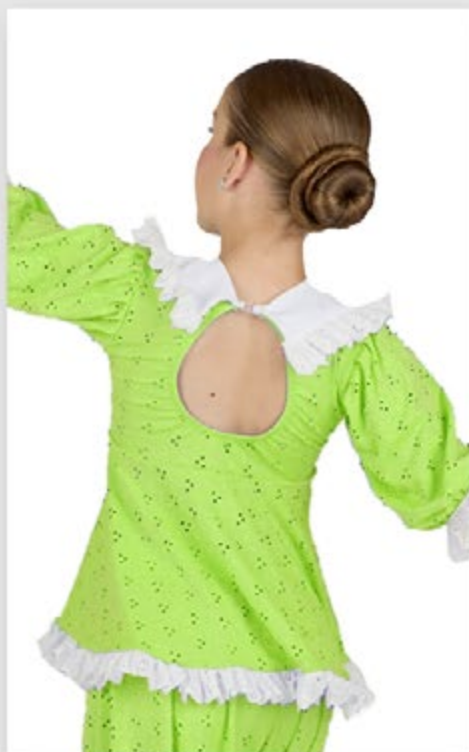
Optional: Pillow

Shown Purple

Eyelet Lace Colors



Shown Lime



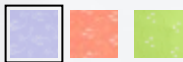


**83487**

Includes: Top and Pants

Optional: Hair

Shown Purple





**83488**

Includes: Top, Bubble Short

Optional: Hair and Choker

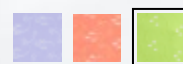
Shown Tangerine



**83490**

Includes: Top, Brief

Shown Lime



Ball and Sunglasses  
are not included

**83492**

Includes: Top and Brief

Optional: Hair

Shown Lime Main and Tangerine Accent



**83493**

Includes: Top and Brief

Optional: Hair

Shown Tangerine Main and Purple Accent



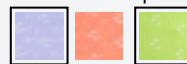


**83494**

Includes: Top and Brief

Optional: Hair

Shown Purple Main and Lime Accent

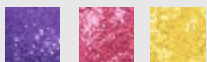


# GINGHAM

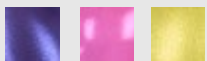
Gingham Colors (page 40 - 50)



Sequin Colors (page 44 - 49)



Metallic Colors (page 48 - 50)



Optional attached white petticoat



**83476**

Includes: Dress

Optional: Petticoat and Hair

Shown Yellow





# GINGHAM

**83475**

Includes: Dress

Optional: Hair

Shown Pink





**83474**

Includes: Top and Pants

Optional: Hair

Shown Pink



**83477**

Includes: Top and Shorts

Optional: Hair

Shown Pink



# GINGHAM

**83478**

**Includes:** Top and Briefs

**Optional:** Hair

Shown Purple



# GINGHAM

**83479**

Includes: Leotard

Optional: Mitts, Hair and Choker

Shown Pink Gingham and Sequin





# GINGHAM

**83480**

Includes: Top and Skirt

Optional: Hair

Shown Yellow Gingham and Sequin



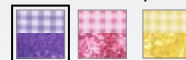
# GINGHAM

**83481**

Includes: Dress

Optional: Hair

Shown Purple Gingham and Sequin





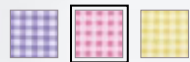
# GINGHAM

**83483**

Includes: Dress

Optional: Hair

Shown Pink Gingham and Mesh



Shown Purple Sequin





# GINGHAM

**83484**

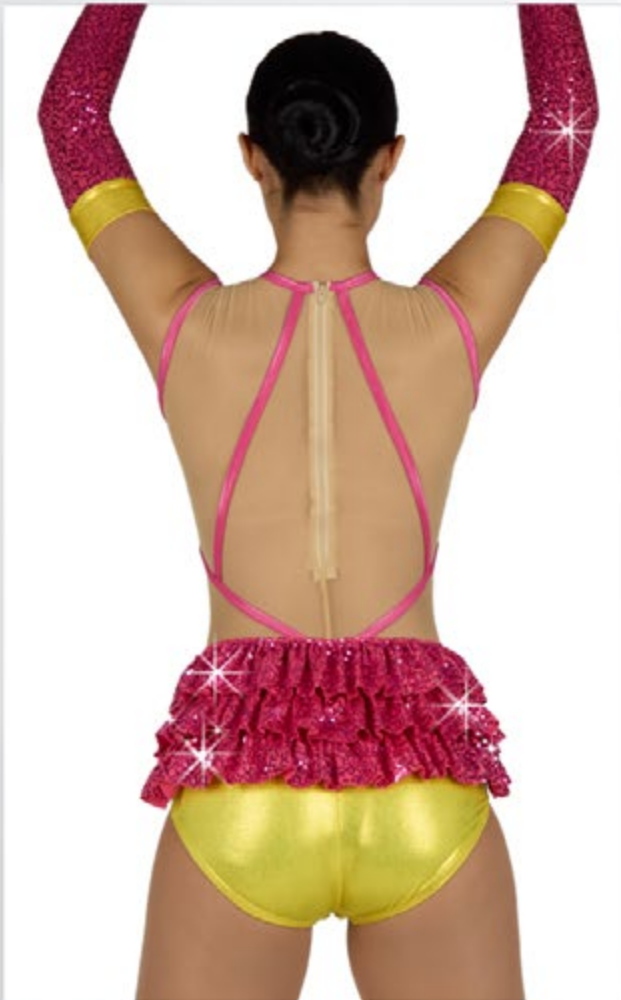
Includes: Leotard

Optional: Mitts and Hair

Shown Yellow Gingham and Metallic



Shown Pink Sequin



# GINGHAM

**83485**

Includes: Top and Skirt

Optional: Hair

Shown Yellow Gingham and Sequin



Shown Pink Metallic





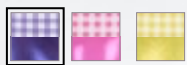
# GINGHAM

**83482**

Includes: Top and Skirt

Optional: Hair

Shown Purple Gingham  
and Metallic





# SUEDE

**83295**

Includes: Top and Skirt

Optional: Mitts

As Shown



# SUEDE

**83297**

Includes: Vest, Cami Top  
and Hi-Lo Skirt  
Optional: Mitts

As Shown



# SUEDE

**83299**

Includes: Vest, Cami Top,  
Chaps and Boy shorts  
Optional: Mitts

As Shown





# SUEDE

**83301**

Includes: Top and Skirt

Optional: Mitts

As Shown



Optional Mitts

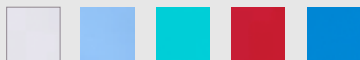


# POLKA DOT

## Polka Dot Colors



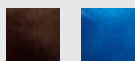
## Tricot Colors (page 106 - 109)



## Metallic Colors (page 113 - 116)



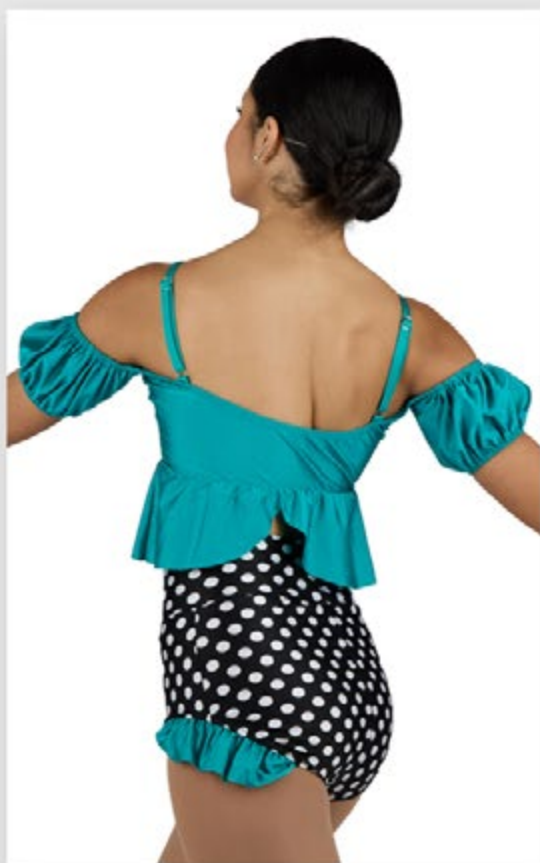
## Velvet Colors (page 110 - 112)



**83548**

Includes: Top and Brief

Shown Jade



# POLKA DOT

**83547**

Includes: Top and Skirt

Shown Periwinkle





# POLKA DOT

**83549**

Includes: Top and Brief

Optional: Mitts and Hair

Shown White



Ruffle collar

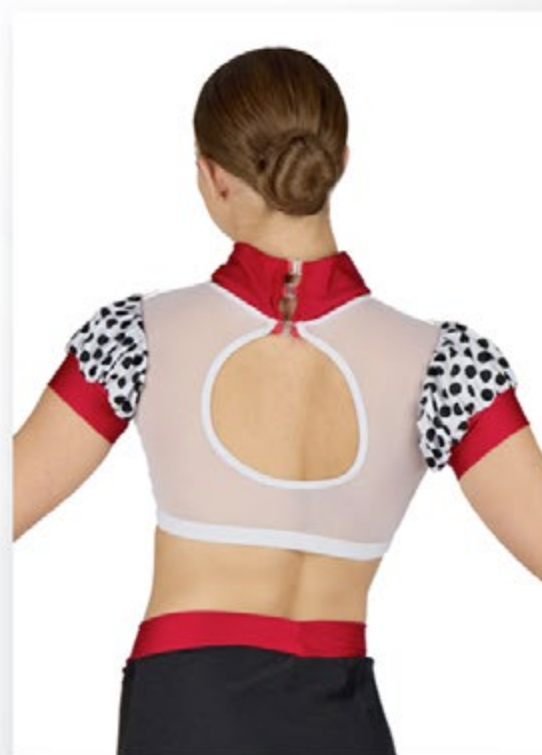


# POLKA DOT

**83550**

Includes: Top and Skirt

Shown Red



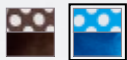
# POLKA DOT

**83541**

Includes: Top and Brief

Optional: Mitts and Hair

Shown Royal





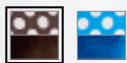
# POLKA DOT

**83543**

Includes: Dress

Optional: Gloves and Hair

Shown Brown



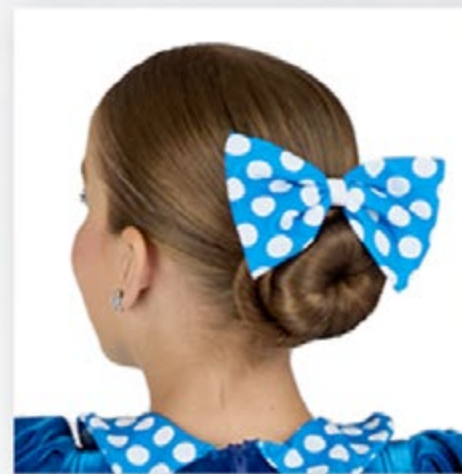
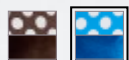
# POLKA DOT

**83542**

Includes: Dress

Optional: Hair

Shown Royal



Optional Hair

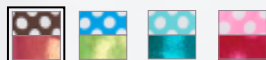
# POLKA DOT

**83537**

Includes: Top and Brief

Optional: Hair and Choker

Shown Brown





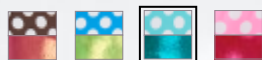
# POLKA DOT

**83539**

Includes: Dress

Optional: Hair and Choker

Shown Mint



# POLKA DOT



**83538**

**Includes:** Top, Bubble Short

**Optional:** Hair and Choker

Shown Pink



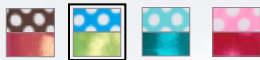
# POLKA DOT

**83540**

Includes: Top and Brief

Optional: Hair and Choker

Shown Royal





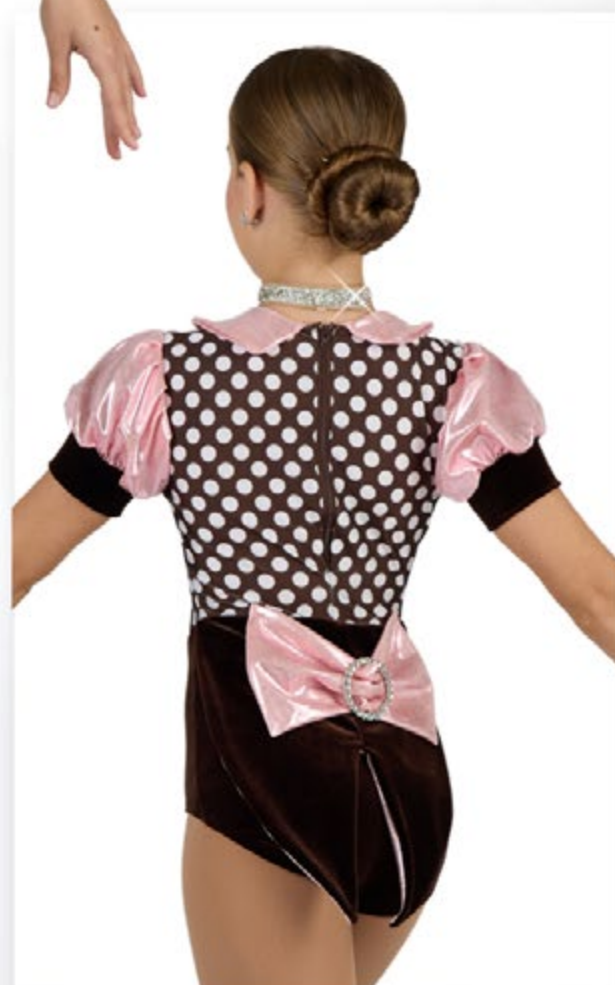
# POLKA DOT

**83544**

Includes: Leotard with Tails

Optional: Choker

As Shown



# FLOCK ANIMAL

**83470**

Includes: Dress and Choker

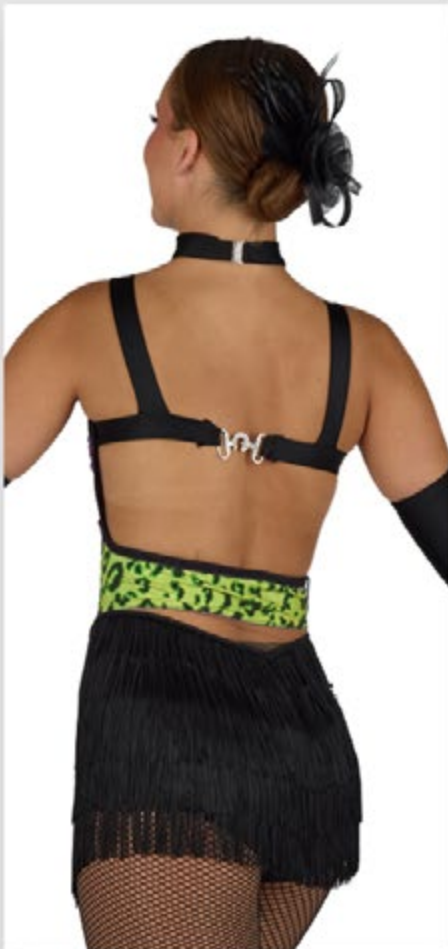
Optional: Mitts and Hair

Shown Purple

Flocked Animal Colors



Shattered Colors (page 38-39)



# FLOCK ANIMAL



**83471**

Includes: Dress and Choker

Optional: Mitts

Shown Neon Yellow





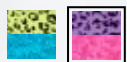
# FLOCK ANIMAL

**83472**

**Includes:** Dress

**Optional:** Arms and Headband

Shown Purple Flock with Hot Pink Shattered



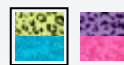
# FLOCK ANIMAL

**83473**

**Includes:** Dress

**Optional:** Mitts and Hair

Shown Neon Yellow Flock with  
Shattered Turquoise



# CHARACTER COSTUMES

**83559**

Includes: Top and Pants

Optional: Numbers

As Shown





# CHARACTER

**83560**

Includes: Top and Cheer Skirt

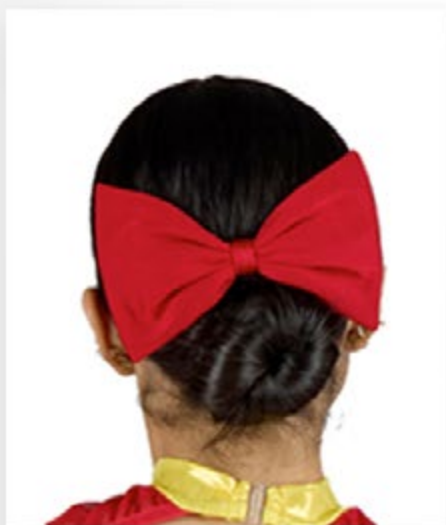
Optional: Hair

As Shown

Pompoms not included



Optional Hair Bow



# CHARACTER

**83556**

Includes: Dress

Optional: Hair and Mitts

As Shown



**83555**

Includes: Dress

Optional: Hair and Mitts

As Shown



Broom not included



# CHARACTER

**83552**

**Includes:** Leotard and Choker

**Optional:** Ears and Mitts

As Shown



**83553**

**Includes:** Bubble Unitard

**Optional:** Headband with Ears and Mitts

As Shown





# CHARACTER

**83557**

Includes: Dress

Optional: Mitts

As Shown



**83558**

Includes: Dress

Optional: Mitts

As Shown

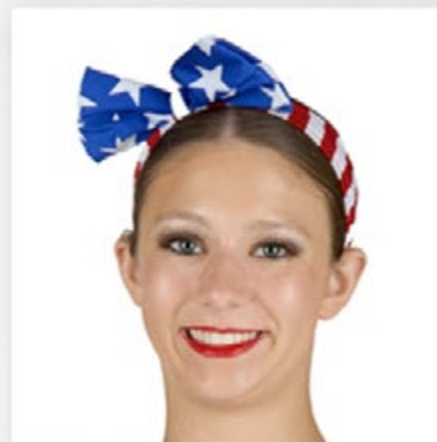


# CHARACTER

**83564**

Includes: Leotard  
Optional: Mitts, Legs  
and Hair

As Shown



Optional Hair

Flag not included

# CHARACTER

**83563**

Includes: Leotard

Optional: Hair

As Shown





# CHARACTER

**83562**

Includes: Top and Skirt  
Optional: Hair and Mitts

As Shown



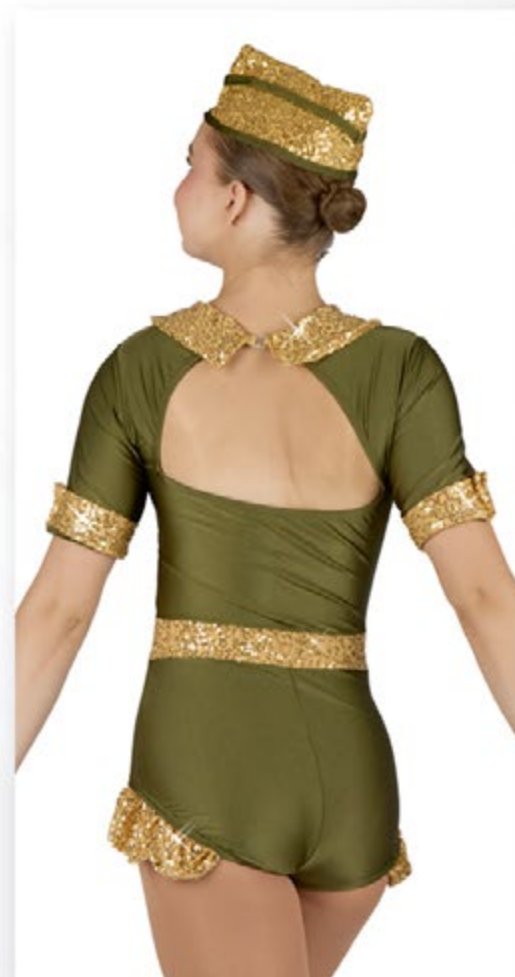
# CHARACTER

**83565**

Includes: Leotard

Optional: Hat

As Shown



# CHARACTER

**83561**

Includes:  
Top and Pants

As Shown





# CHARACTER

**83566**

Includes: Top, Skirt, Sash

Optional: Hat

As Shown



# CHARACTER

**83567**

Includes: Dress, Choker, Brief  
Optional: Hat

As Shown



# CHARACTER

**83568**

Includes: Unitard

As Shown



**83569**

Includes: Leotard

Optional: Belt Patch

As Shown





# CHARACTER

**83570**

Includes: Leotard

As Shown



## HOW TO ORDER

### ♥ ONLINE

**www.pumpers.com**  
(by SKU number)

### ♥ FAX

(316) 263 7636

### ♥ MAIL

Pumpers, Inc.  
1060 N. West St.  
Wichita, KS 67203

## SIZING

### Child XS - Adult XL

Costumes are offered from child XS to adult XL. If you have a hard to fit person, we will alter to special sizing. Additional costs will apply.

## SOLOS TO GROUPS

You can order any quantity you want!

## DELIVERY DATE

Pumpers costumes are made to order. You will be given a ship date when the order is placed. If you are in a rush, let us know and we will do our best to accommodate your needs! Our current ship dates are always online. We take your ship date seriously and DO NOT miss them!

## ORDER CHANGES / CANCELLATIONS

There is a small fee for order adjustments or cancellations of your order, as long as your order has not been started. If the order has been started, there will be a larger fee for change or cancellation. This fee depends on how far along we are on your order.

## EXCHANGES

We have no costumes to exchange with because we make every costume to order. In the event you order the wrong size, we will sell you a replacement at 50% off. This does not apply to accessories.

## PAYMENT OPTIONS / BALANCE DUE PROCEDURES

Payment of 50% is required to start all orders. You may also pay in full to avoid any delays in shipment.

### If you have a balance:

The balance is due before your order ships. Please allow 21 business days for a check to clear. We also accept VISA®, MasterCard® and American Express®. If the order is shipped COD, a \$20 COD fee will apply and only a certified check, money order or cashier's check will be accepted.

## LIABILITY

In the case of non-delivery by a specific date, Pumpers Dancewear or its affiliates will not be liable or responsible for any damages whatsoever beyond monies paid by the customer.

## INSURANCE OF GARMENT(S)

Pumpers Dancewear will insure your order. We cannot be responsible for orders which are lost or damaged during shipment. We will do whatever humanly possible to assist you in handling claims with UPS/FedEx.

## SHIPPING PROCEDURES

Pumpers Dancewear ships from Wichita, KS via UPS/FedEx ground. You may request faster delivery, but please be advised, additional shipping cost will apply. If you have supplied us with your e-mail address, you will be sent the tracking number via UPS/FedEx's e-mail service.

## CUSTOM ORDERS / CUSTOM DESIGNS

Use our blank body form to draw on or send us photos or links to what you want. From there you will get a price quote. We always need quantities.

### Custom Fabrics

For groups of 8 or more, we will look for fabric we do not stock — just for you!

### Custom Sizing

We will alter, additional costs will apply.

## PHOTOGRAPHERS

Rachel Lanier      rachel@rachellanierstudios.com

## GRAPHIC DESIGNER

Michelle Abril      4m.abril@gmail.com

## CHOREOGRAPHERS

Diane Gans (Kansas Dance Academy)  
Hydi Diaz (Rise Dance Arts)

## MODELS

Carly Berglind	Hannah Oedng
Ali Escalante	Jovi Nittler
Maggie Johnson	Arianna Reza
Leni Novascone	Emery Robinson
Izzy Novascone	

**ALL COSTUMES ARE MADE ON LOCATION IN THE USA!**